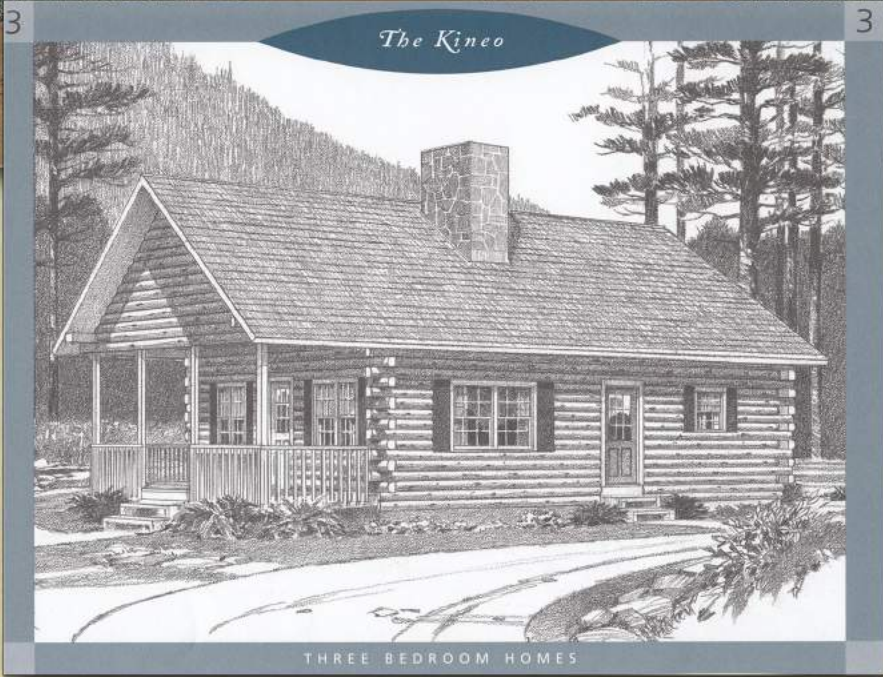




The Kineo



Northeastern Log Homes

info@northeasternlog.com 800-624-2797 www.northeasternlog.com

*Artist's rendering, photography and optional design ideas may vary from the standard model. Please always consult the standard floorplan and refer to the Premier Series material list as to what is included.



The Kineo

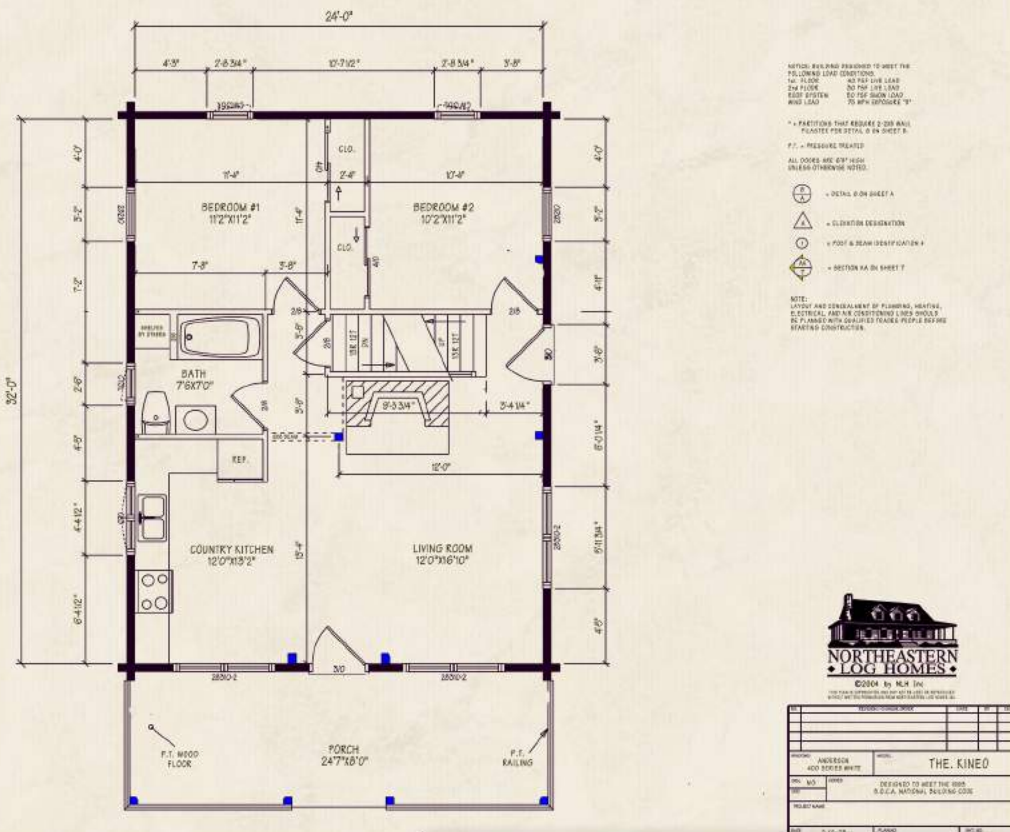
Premier Home Series

24' x 32' Size

1,116 Square Feet

Three Bedrooms

1 Bath



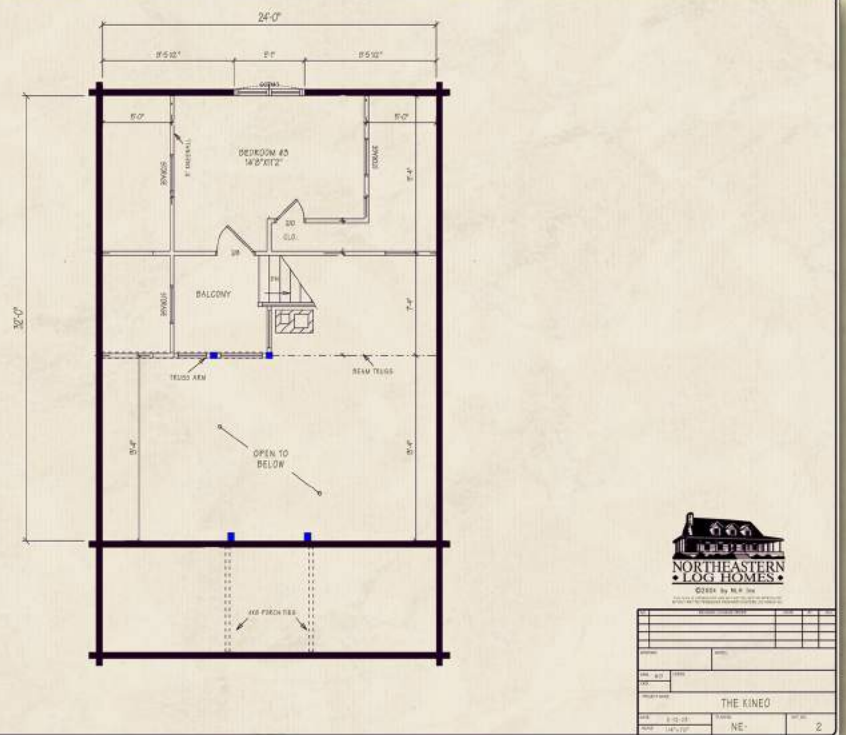
Optional Design Ideas:

Remove the partition between bedroom #1 and bedroom #2 to make a master bedroom suite on the first floor

Now, the first floor bath can be repurposed to a guest bath, and with adding a bedroom to the at grade area, you can instantly create a terrific three bedroom getaway home.

Utilize built-in drawers with full extension glides in that second floor at the storage area--this removes the need for a bureau or other lowboy piece of furniture in that room, giving it more space

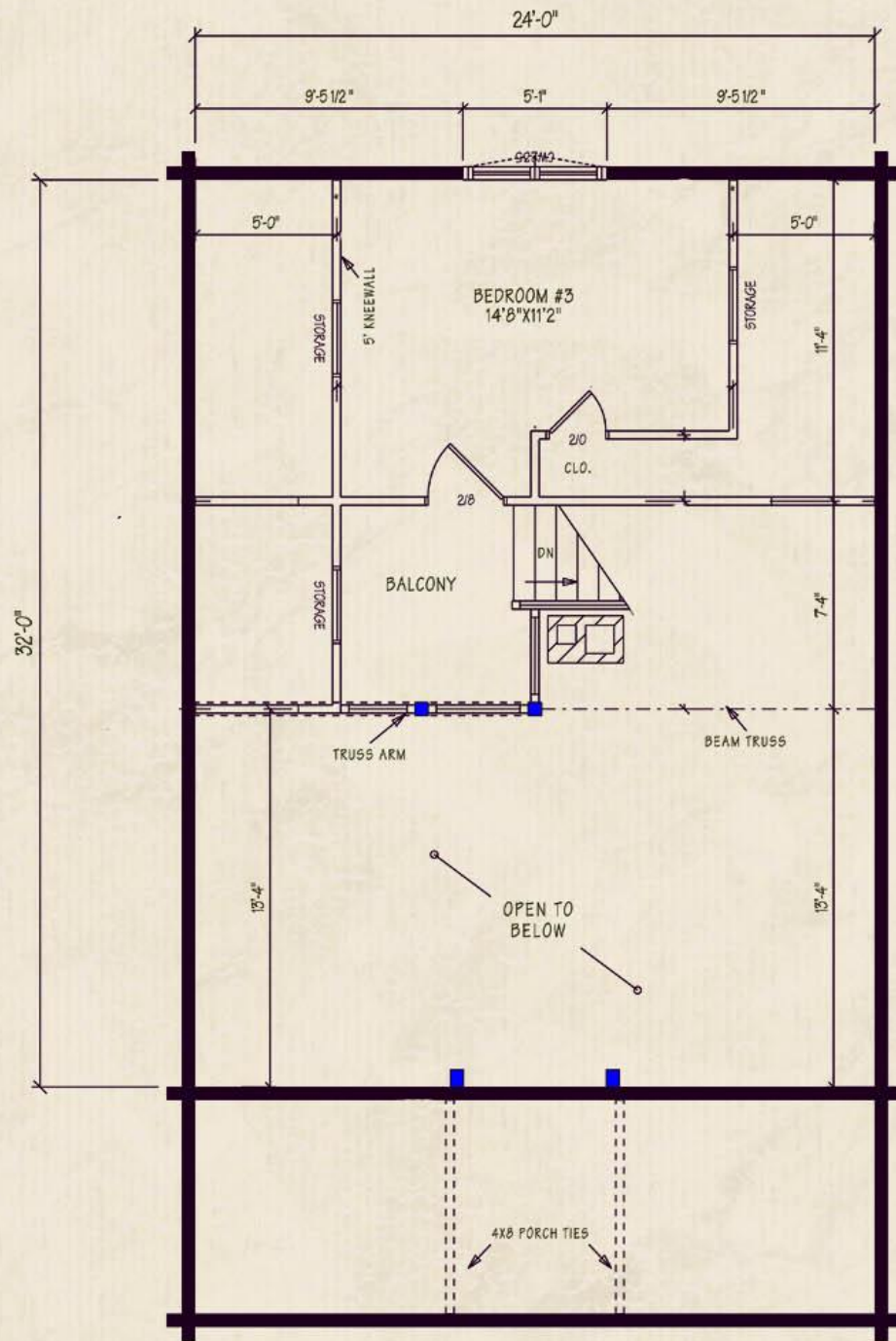
Change the front porch full log gable over to the look of an open beam truss.
(See the Sportsman in our Camp & Cabin series for an illustration of what that exterior truss idea would look like!)



Northeastern Log Homes

info@northeasternlog.com 800-624-2797 www.northeasternlog.com

*Artist's rendering, photography & optional design ideas may vary from the standard model. Please always refer to the standard floorplan and consult the Premier Home Series Material List as to what is included. All plans, photography and images copyright NLH 2016



**NORTHEASTERN
LOG HOMES**

©2004 by NLH Inc

THIS PLAN IS COPYRIGHTED AND MAY NOT BE USED OR REPRODUCED WITHOUT WRITTEN PERMISSION FROM NORTHEASTERN LOG HOMES INC.

NO.	REVISION / CHANGE ORDER	DATE	BY	CHK.
WINDOWS		MODEL		
DRN	M/G	CODES		
CLD.				
PROJECT NAME				
THE KINEO				
DATE	2-12-03	PLAN NO.	SHT. NO.	
SCALE	1/4" = 1'-0"	NE-	2	